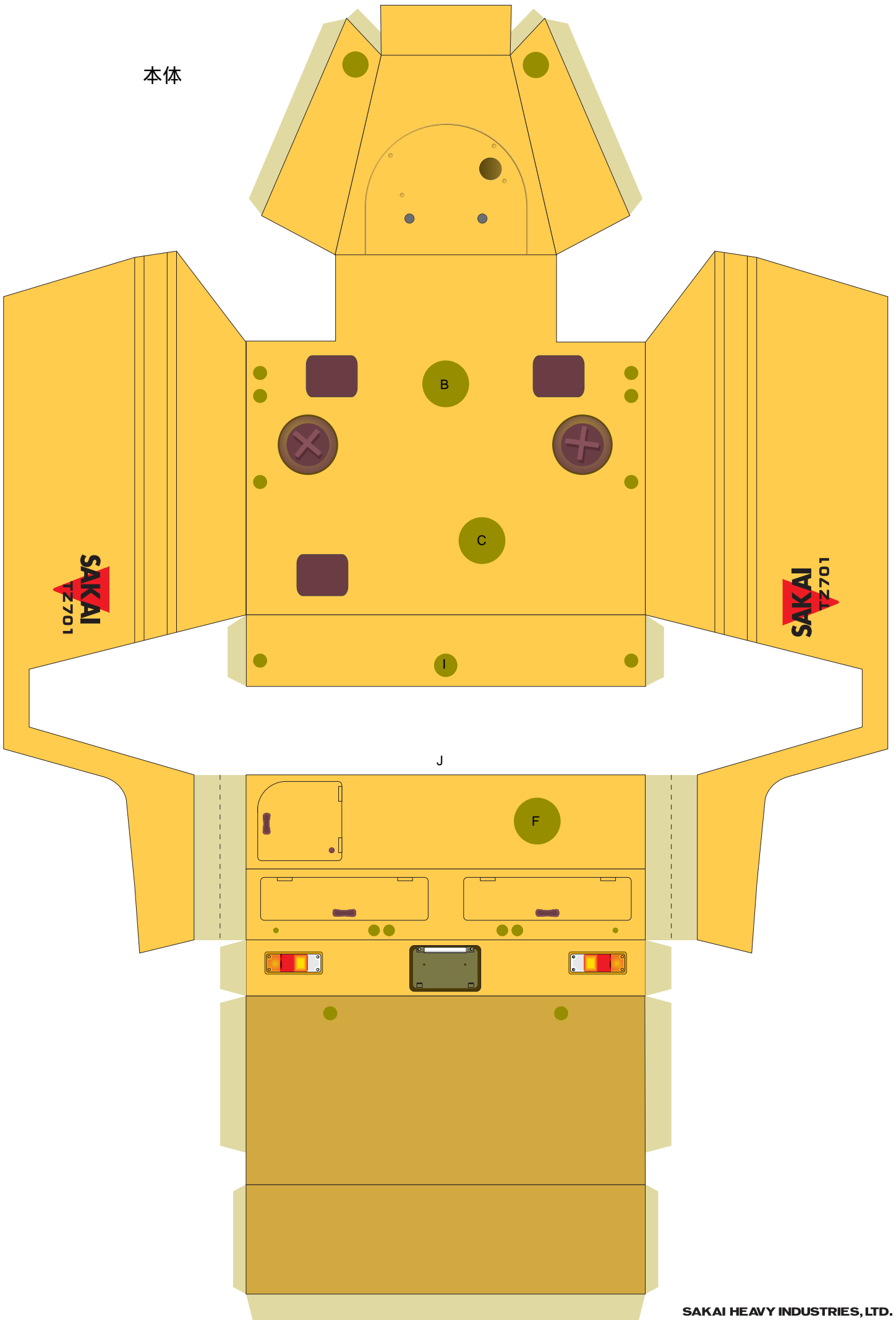
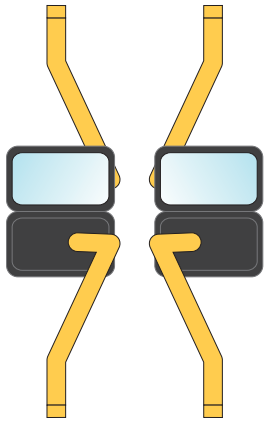


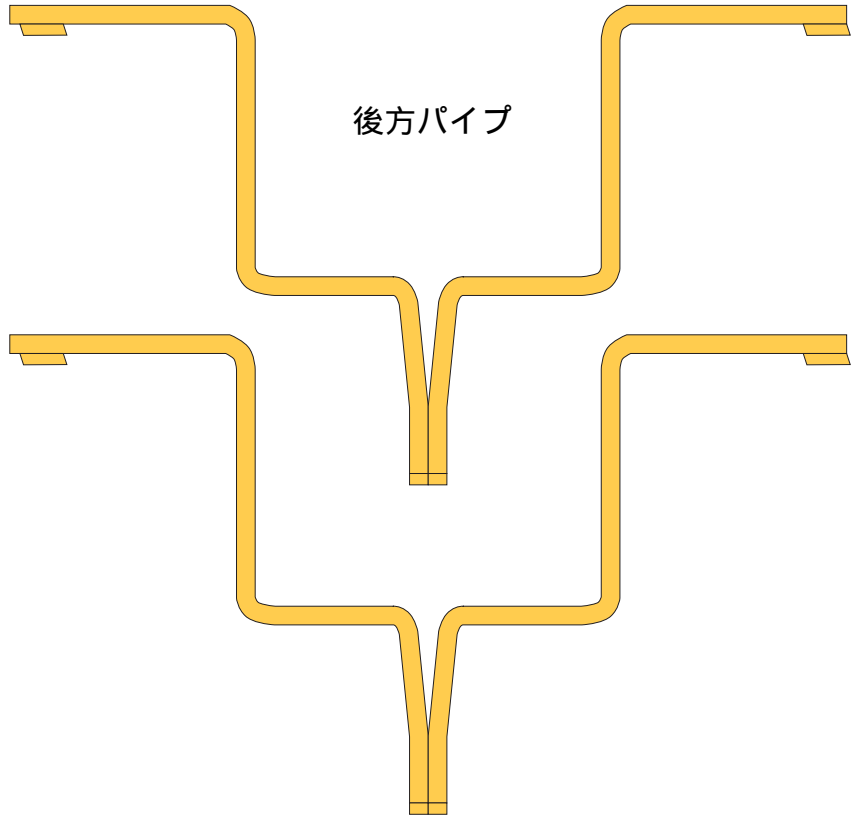
本体



後方ミラー



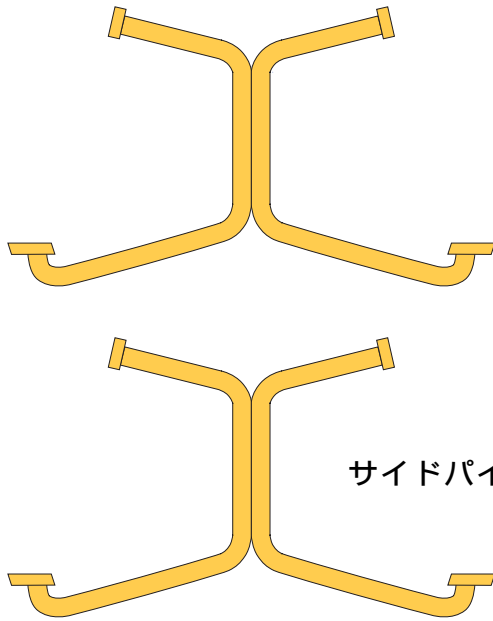
後方パイプ



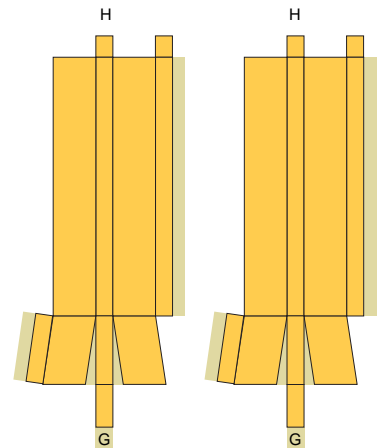
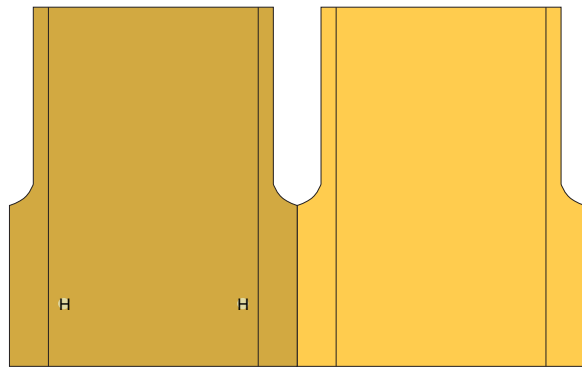
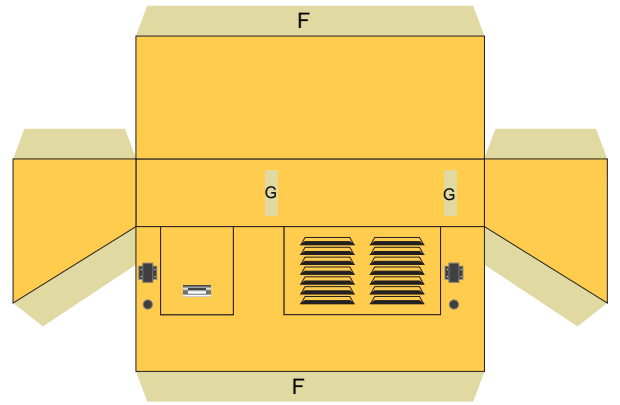
前方ミラー



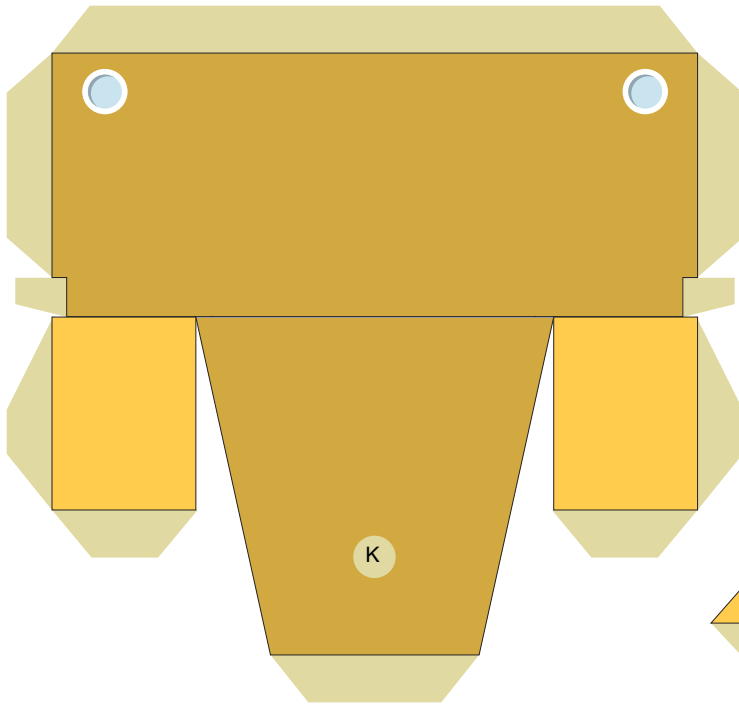
サイドミラー



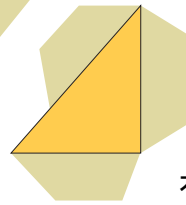
サイドパイプ



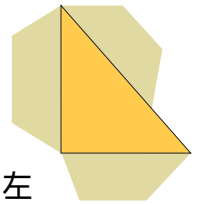
( 4 )



( 3 )



右

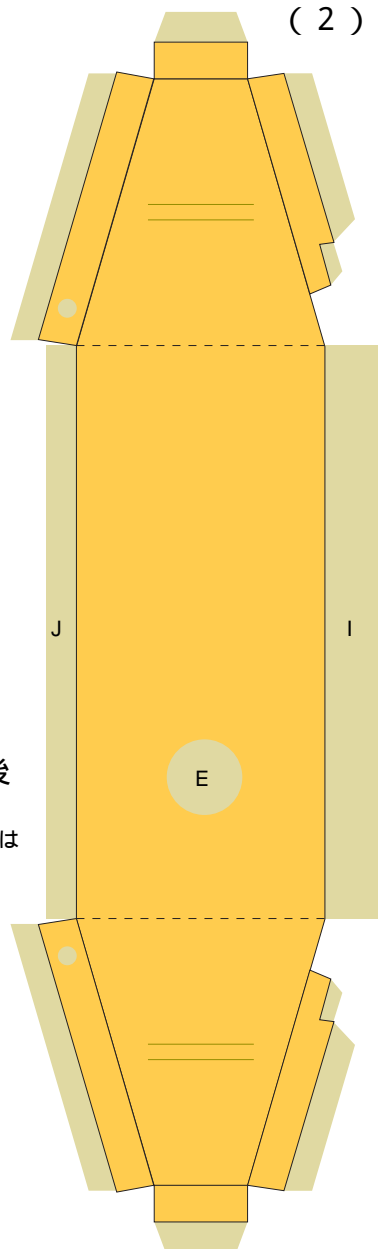


左

( 2 )



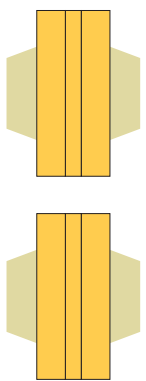
底面



前

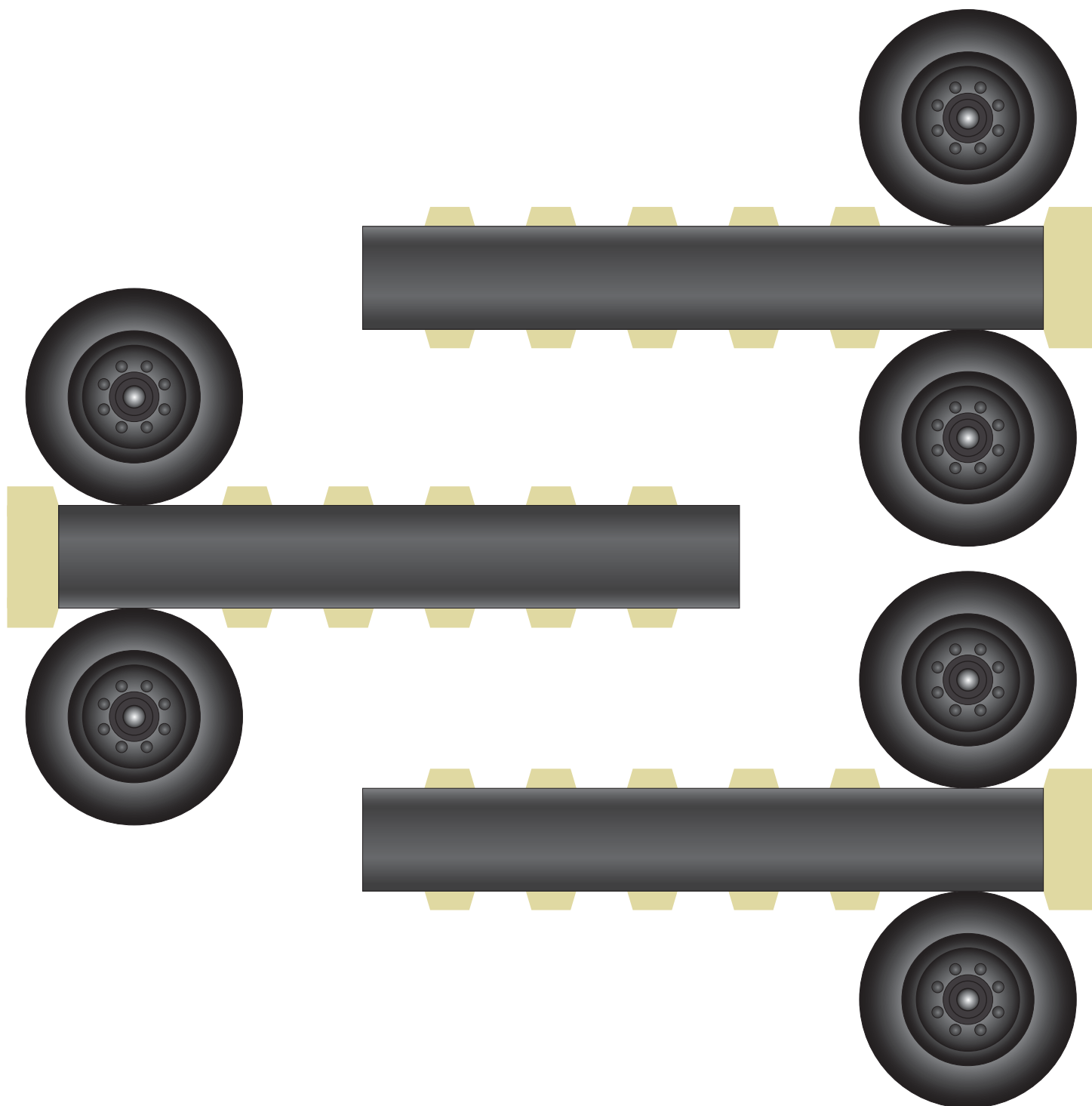
後

のりしろJは  
折らない

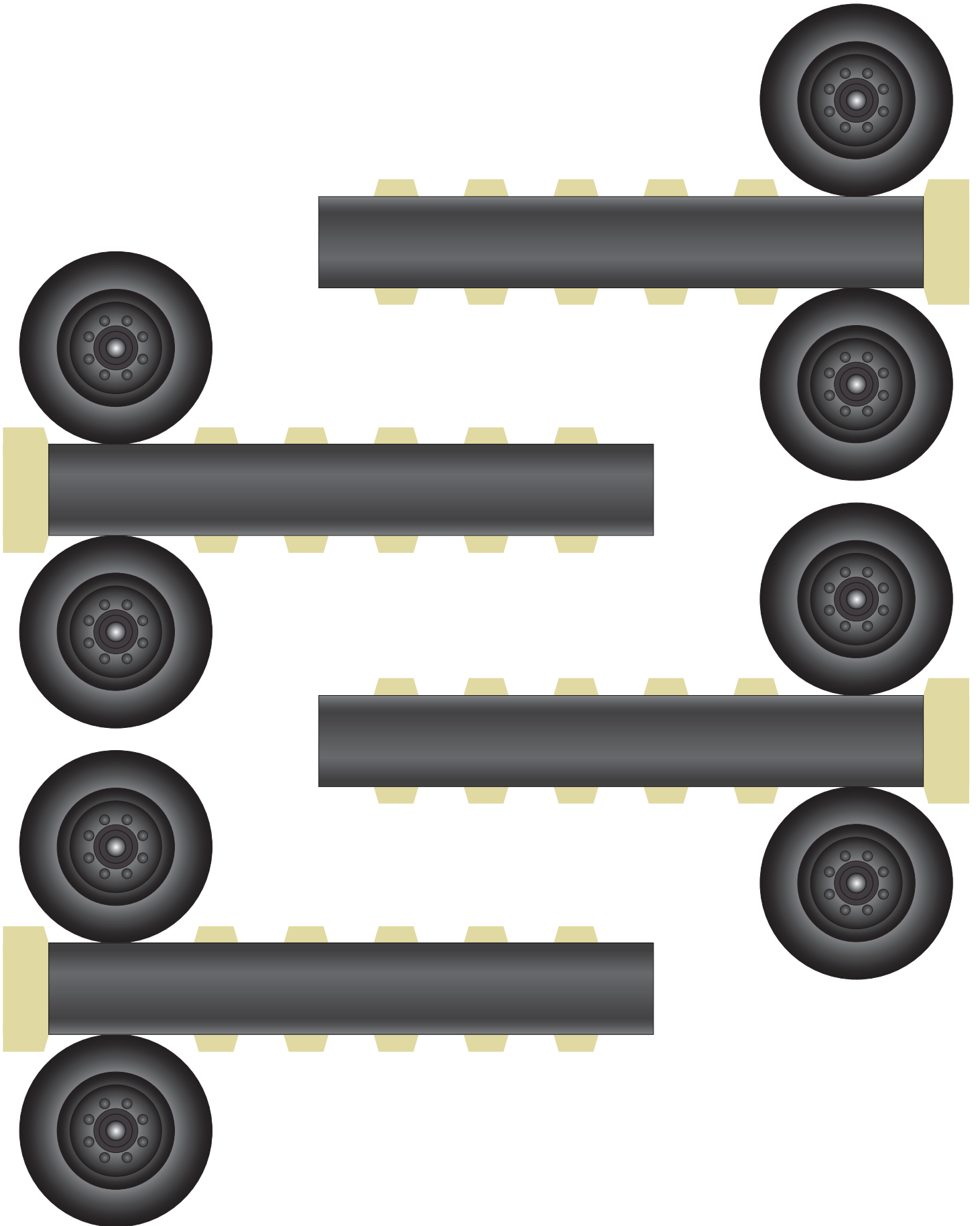


(1)  
ステップ部

タイヤ

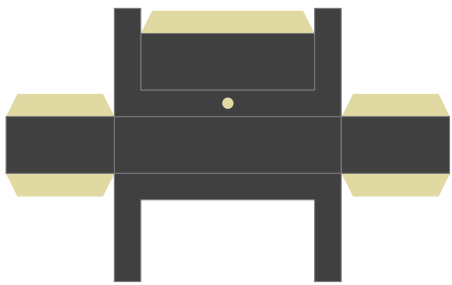
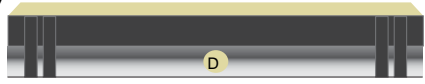
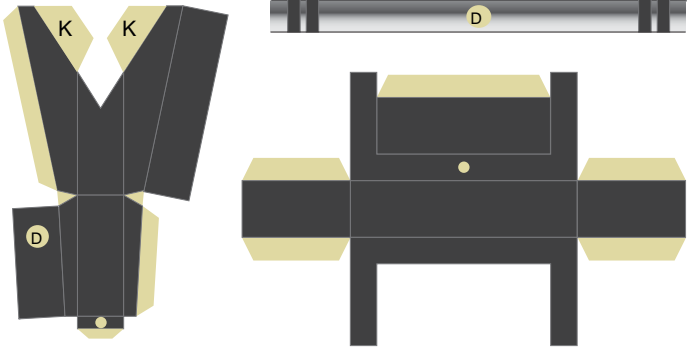


タイヤ

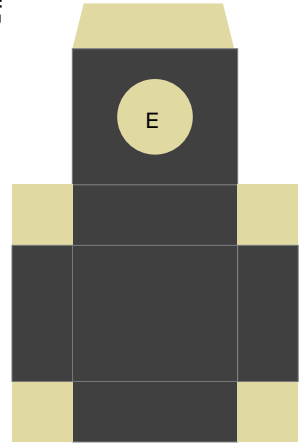
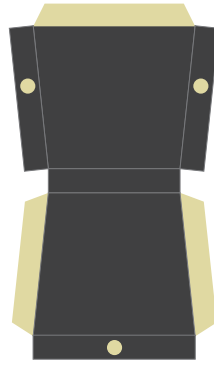


のりしろKは谷折りで裏をのり付け

(5)



運転席



(a)



(7)後方泥除け

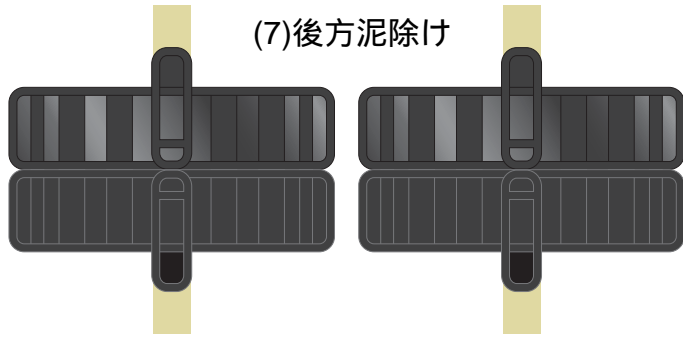
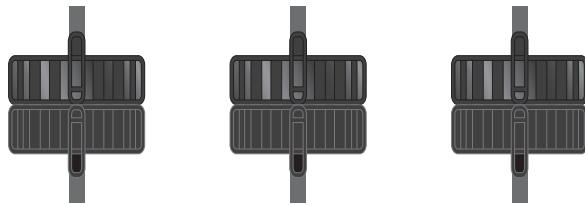


表  
裏



(6)前方泥除け

